



For all creatures great and small.

RSPCA Australia National Statistics 2002-2003

The RSPCA receives thousands of animals every year in every State and Territory in Australia. Annual statistics on the numbers of animals received, reclaimed or rehomed are compiled on a national basis by RSPCA Australia. The following statistics cover the 2002 to 2003 financial year and give details on the receipt and placement of animals by each State and Territory RSPCA during that period.

- The RSPCA received 132,964 animals in 2002-2003, similar to last year's figure of 132,054. Individual State and Territory results were generally similar to last year, with the exception of Western Australia and Queensland being up by 10% and 13% respectively, and South Australia being down by 26%. The drop in numbers for RSPCA SA follows a peak in farm inspections and a very high Spring breeding rate for wildlife last year in the State. This year's intake of cats and dogs for RSPCA SA was similar to last year.
- A total of 64,593 dogs were received by the RSPCA this year, an increase of 4.7%. Likewise we received a small increase of 3.9% in the number of cats received (51,702 this year). The total number of other animals such as horses, livestock, wildlife and small animals decreased significantly from 20,608 last year to 16,669 in 2002-2003, down by 19.1%. This was largely due to the drop in livestock and wildlife received in SA.
- 56.1% of the dogs received by RSPCA shelter were found homes, either by their owner reclaiming them or by placing them in a new home. In addition, 32.8% of cats were rehomed. Unfortunately, 38% of dogs and nearly 60% of cats were euthanased because suitable homes could not be found.
- The RSPCA investigated 43,888 cruelty complaints, and initiated 330 prosecutions in 2002-2003. Nearly 50% of cruelty complaints and over 50% of prosecutions received related to dogs.
- The RSPCA has 17,848 voting members and 3,887 child members. 5,057 people volunteered their time in shelters, fund raising and administration roles.

More detailed information is provided in the following figures and tables:

Table 1: Animals received nationally by the RSPCA for the 2002-2003 financial year

Table 2: Comparison of animals received over the past 5 years

Table 3: Breakdown of animals received by each State and Territory RSPCA.

Table 4: Cruelty complaints and prosecutions by State/Territory RSPCA

Table 5: Breakdown of cruelty complaints and prosecutions over the last 5 years

Table 6a: Cruelty complaints by type of animal in each state/territory

Table 6b: Cruelty prosecutions by type of animal in each state/territory

Table 7: Members of the RSPCA in each state/territory

Table 8: Volunteer numbers in each state/territory

Figure 1: The fate of animals received by the RSPCA in 2002-2003

Figure 2: Total numbers of animals received over the past five years

Figure 3: Complaints, prosecutions and convictions over the past five years

Figure 4: Cruelty complaints and prosecution by type of animal

Figure 5: Total members by category

Figure 6: Total volunteers by category.

Table 1: Animals received nationally by the RSPCA for the 2002-2003 financial year

	Number of animals	Percentage of total
Total animals received	132,964	
Dogs received	64,593	(48.6% of total)
Reclaimed	14,788	(22.9% of dogs)
Rehomed	21,469	(33.2% of dogs)
In Stock	2,010	(3.1% of dogs)
Transferred	1,261	(2% of dogs)
Euthanased	24,554	(38% of dogs)
Other*	511	(0.8% of dogs)
Cats received	51,702	(38.9% of total)
Reclaimed	1,051	(2% of cats)
Rehomed	16,939	(32.8% of cats)
In Stock	1,492	(2.9% of cats)
Transferred	1,473	(2.8% of cats)
Euthanased	30,449	(58.9% of cats)
Other*	297	(0.6% of cats)
Other animals received[#]	16,669	(12.5% of total)
Reclaimed	2,390	(14.3% of others)
Rehomed	1,678	(10.1% of others)
In Stock	2,204	(13.2% of others)
Transferred	7,185	(43.1% of others)
Euthanased	2,823	(16.9% of others)
Other*	389	(2.3% of others)

*Including: dead on arrival, escaped, foster care or not specified.

[#] Including: horses, small animals, livestock, and wildlife.

Figure 1: The fate of animals received by the RSPCA in 2002-2003

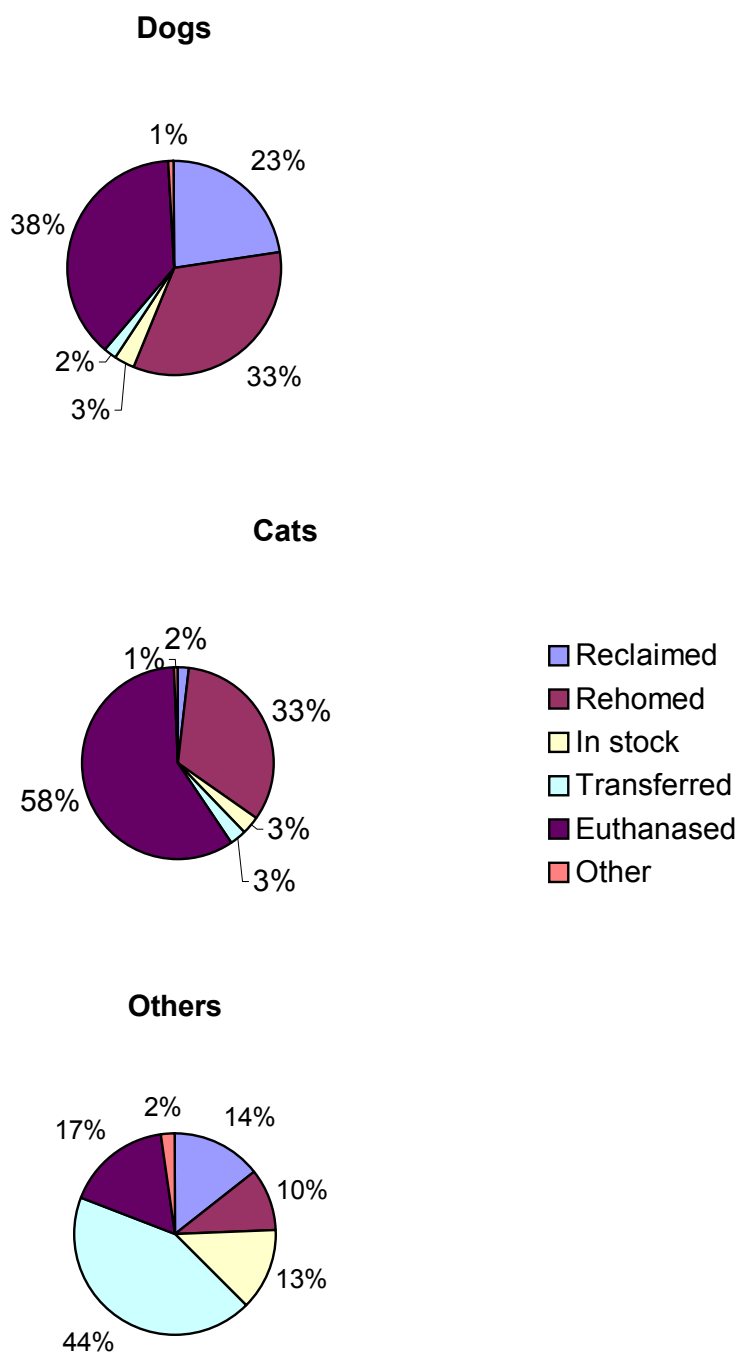


Table 2: Comparison of animals received over the past 5 years

	1998- 1999	1999- 2000	2000- 2001	2001- 2002	2002- 2003	Change from previous year
Total	153,495	138,607	134,670	132,054	132,964	Up 0.7%
Dogs	72,360	67,204	64,471	61,692	64,593	Up 4.7%
Reclaimed/rehomed/other	38,464	40,865	38,560	38,084	40,039	Up by 5.1%
Euthanased	33,896	26,339	25,911	23,608	24,554	Up by 4.0%
Cats	59,006	50,485	51,598	49,754	51,702	Up 3.9%
Reclaimed/rehomed/other	16,486	19,283	18,697	18,745	21,253	Up by 13.4%
Euthanased	42,520	31,202	32,901	31,009	30,449	Down by 1.8%
Others	22,126	20,918	18,601	20,608	16,669	Down 19.1%
Reclaimed/rehomed/other	13,382	13,830	9,871	11,172	7,662	Down by 31.4%
Euthanased	8,744	7,088	8,730	9,436	9,007	Down by 4.5%

Figure 2: Animals received over the past five years

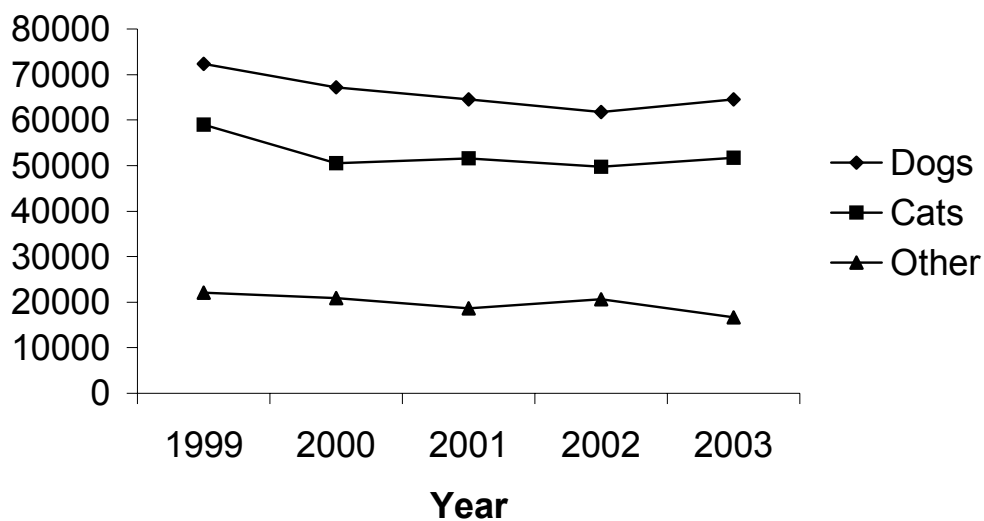


Table 3: Breakdown of animals received by each State and Territory RSPCA

	State/Territory RSPCA								Total
	ACT	NSW	NT*	QLD	SA	TAS	VIC	WA	
Dogs	1767	18001	1815	15939	5110	1623	18277	2061	64593
Reclaimed	592	2921	254	1821	1058	513	6960	669	14788
Rehomed	873	6500	562	4711	2095	531	5369	828	21469
In stock ¹	74	699	39	599	101	32	330	136	2010
Transferred ²	2	280	0	39	321	94	145	380	1261
Euthanased	216	7105	960	8769	1535	450	5473	46	24554
Other ³	10	496	0	0	0	3	0	2	511
Cats	2078	11316	1241	17071	4247	1687	13443	619	51702
Reclaimed	109	182	20	29	49	68	586	8	1051
Rehomed	1110	4426	374	4028	1122	622	4805	452	16939
In stock	77	324	68	533	24	43	392	31	1492
Transferred	5	91	0	6	0	167	1204	0	1473
Euthanased	755	6042	779	12475	3052	777	6456	113	30449
Other	22	250	0	0	0	10	0	15	297
Horses	3	43	1	29	13	18	2	3	112
Reclaimed	0	10	1	4	3	1	0	0	19
Rehomed	1	15	0	9	0	3	2	1	31
In stock	2	15	0	6	8	14	0	1	46
Transferred	0	0	0	4	0	0	0	0	4
Euthanased	0	1	0	6	2	0	0	1	10
Other	0	2	0	0	0	0	0	0	2
Livestock	168	671	14	873	204	76	293	107	2532
Reclaimed	1	26	0	17	61	6	22	1	134
Rehomed	119	317	12	229	55	41	64	65	902
In stock	21	90	2	19	2	9	0	6	149
Transferred	0	4	0	232	0	9	0	0	245
Euthanased	4	231	0	376	86	9	97	29	832
Other	149	3	0	0	0	2	110	6	270
Wildlife	2099	1122	0	1807	822	215	5495	0	11550
Released	692	376	0	502	128	70	318	0	2086
In stock	27	4	0	1	0	1	4	0	37
Transferred	51	335	0	63	273	65	1112	0	1899
Euthanased	1329	370	0	1241	421	63	3432	0	6856
Other	0	37	0	0	0	6	629	0	672
Other animals	278	1168	8	19	349	205	448	0	2475
Reclaimed	19	26	0	10	72	14	10	0	151
Rehomed	160	215	6	3	73	66	185	0	708
In stock	21	77	2	5	0	5		0	110
Transferred	0	78	0	0	0	2		0	80
Euthanased	76	752	0	1	204	23	253	0	1309
Other	2	20	0	0	0	95		0	117
Total received	6393	32321	3079	35738	10745	3824	37958	2790	132964
2001-2002	6407	31125	3084	31688	14573	3975	38661	2541	132054
% change from previous year	Down 0.22%	Up 3.84%	Down 0.16%	Up 12.78%	Down 26.27%	Down 3.80%	Down 1.82%	Up 9.80%	Up 0.69%

*Data from Darwin Regional Branch only

¹In stock: animals remaining in shelter at 30/06/03

²Transferred: animals transferred to non-RSPCA shelter or pound

³Other: includes animals dead on arrival, escaped, or none of the above categories

Footnote to Table 3: Examples of livestock, wildlife and other animals received by the RSPCA

Livestock	Wildlife	Other animals
<ul style="list-style-type: none"> • Cattle • Chickens • Ducks • Geese • Goats • Guinea Fowl • Muscovy ducks • Peacocks/ peahens • Pigs • Roosters • Sheep 	<ul style="list-style-type: none"> • A wide variety of birds • Bats • Blue-tongue lizards • Brushtailed possums • Leopard Seal • Dingos • Echidnas • Kangaroos • Koalas • Kookaburras • Little penguins 	<ul style="list-style-type: none"> • Lizards • Parrots • Ringtailed possums • Snakes • Sugar gliders • Turtles • Wallabies • Wombats • Budgerigars • Doves • Hermit Crabs • Ferrets • Fish • Guinea pigs • Mice • Pigeons • Rabbits • Rats

Table 4: Cruelty complaints and prosecutions by State/Territory RSPCA

	State/Territory RSPCA								Total
	ACT	NSW	NT*	QLD	SA	TAS	VIC	WA	
Cruelty complaints									
Received	688	12594	199	10630	2934	2461	9667	4715	43888
Investigated	688	12594	199	9079	2934	2388	9667	3601	41150
Revisited	620	#	#	2036	1005	614	#	528	4803
Cruelty prosecutions									
Prosecutions	8	119	0	57	28	#	70	48	330
Convictions	0	#	0	#	28	10	69	31	138
Charges laid	20	442	0	100	51	16	229	48	906
People charged	7	119	0	63	35	10	70	31	335
Cases examined	8	#	1	#	58	#	70	114	251
Cases pending	7	#	1	16	13	17	45	8	107
Routine Inspections	0	50	5	697	203	212	164	182	1513

*Data from Darwin Regional Branch only

Figure not available

Footnote to Table 4: Routine Inspection Details

Following are examples of the types of establishments routinely inspected by the RSPCA:

• Abattoirs	• Hobby farm	• Pounds	• Shows
• Aquariums	• Intensive farms	• Riding schools	• Tourist parks
• Breeding establishments	• Kennels	• Rodeos	• Zoos
• Circuses	• Livestock vessels	• Saleyards	
• Feedlots	• Markets	• Scientific establishments	
• Guard dog firm	• Pet shops	• Shelters	
	• Poultry farms		

Figure 3: Complaints, prosecutions and convictions over the past five years

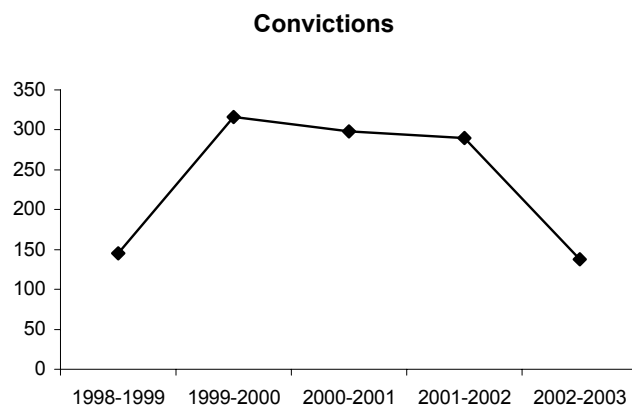
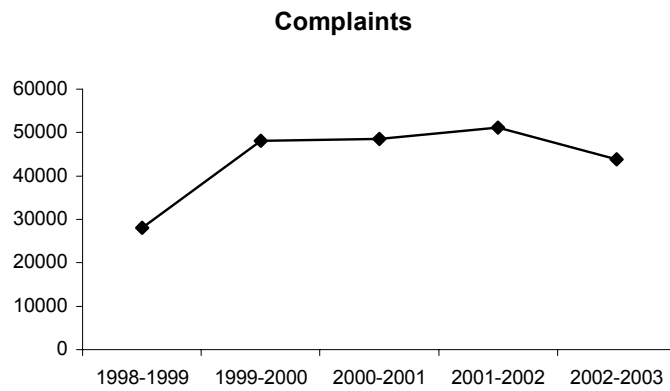


Table 5: Breakdown of complaints and prosecutions over the past 5 years

	State/Territory RSPCA								Total
	ACT	NSW ¹	NT*	QLD	SA	TAS	VIC	WA	
Cruelty complaints									
2002-2003	688	12594	199	10630	2934	2461	9667	4715	43888
2001-2002	601	23,369	236	10,675	2,910	2,360	8,476	2,589	51,216
2000-2001	749	18,831	206	10,704	3,087	2,034	9,579	3,313	48,503
1999-2000	752	18,833	228	9,411	3,162	2,453	10,164	3,075	48,078
1998-1999	769	#	213	8905	3034	2592	9700	2866	28079
Cruelty prosecutions									
2002-2003	8	119	0	57	28	#	70	48	330
2001-2002	10	106	0	62	37	15	73	36	339
2000-2001	13	103	1	87	21	34	57	48	364
1999-2000	9	77	7	70	42	10	105	27	347
1998-1999	15	137	0	66	45	25	114	10	412
Cruelty convictions									
2002-2003	0	#	0	#	28	10	69	31	138
2001-2002	3	104	0	56	23	12	70	22	290
2000-2001	5	101	1	61	19	15	57	39	298
1999-2000	5	74	3	65	38	10	103	18	316
1998-1999	10	#	0	56	43	13	114	9	245

*Data from Darwin Regional Branch only

#Data not available

Table 6a: Cruelty complaints¹ by type of animal and State/Territory RSPCA

	State/Territory RSPCA								Total
	ACT	NSW	NT*	QLD	SA	TAS	VIC	WA	
Dogs	429	#	164	4607	34	1236	4062	1885	12417
Cats	117	#	8	1688	2	202	583	606	3206
Birds	28	#	9	1088	0	64	437	#	1626
Horses	#	#	17	872	5	339	2110	357	3700
Livestock	27	#	0	1794	1	473	1243	371	3909
Wildlife	0	#	0	35	0	16	#	#	51
Other	4	#	9	480	1	131	#	#	625

¹ Refers to the number of complaints received, not the number of animals involved in each complaint. For example, a single complaint about livestock may have involved 100 head of cattle

*Data from Darwin Regional Branch only

#Data not available

Table 6b: Cruelty prosecutions¹ by type of animal and State/Territory RSPCA

	State/Territory RSPCA								Total
	ACT	NSW	NT*	QLD	SA	TAS	VIC	WA	
Dogs	6	63	#	#	36	7	29	12	153
Cats	#	7	#	#	3	1	3	4	18
Birds	#	5	#	#	#	#	5	#	10
Horses	#	12	#	#	5	#	11	4	32
Livestock	#	31	#	#	1	1	16	10	59
Wildlife	#	0	#	#	#	#	#	#	0
Other	#	1	#	#	1	1	#	#	3

¹ Refers to the number of complaints received, not the number of animals involved in each complaint. For example, a single complaint about livestock may have involved 100 head of cattle

*Data from Darwin Regional Branch only

#Data not available

Figure 4: Cruelty complaints and prosecutions by type of animal in 2002-2003

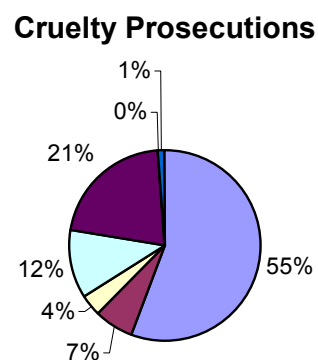
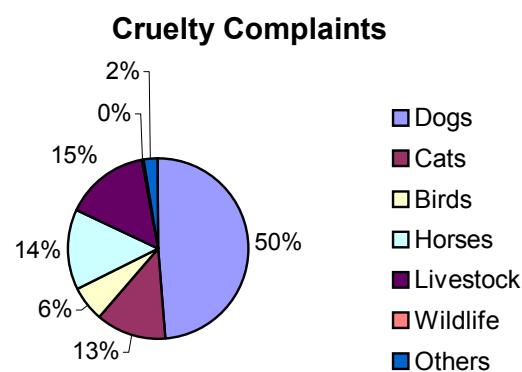


Table 7: Members of the RSPCA in each State/Territory

	State/Territory RSPCA								Total
	ACT	NSW	NT*	QLD	SA	TAS	VIC	WA	
Voting members ¹	957	6894	297	1341	3525	364	2738	1732	17848
Life	7	4609	19	727	946	80	346	917	7651
Adult/ Full	625	1900	173	597	1668	239	1196	631	7029
Concession/ Senior	126	384	24	4	482	0	521	111	1652
Family	196	0	81	0	427	45	469	61	1279
Corporate	0	0	0	0	0	0	8	2	10
Honary	3	1	0	13	2	0	90	10	119
Other	0	0	0	0	0	0	108	0	108
Child	200	138	0	137	206	7	2591	608	3887

*Data from Darwin Regional Branch only

¹Does not include Child membership

Figure 5: Total Members by Category

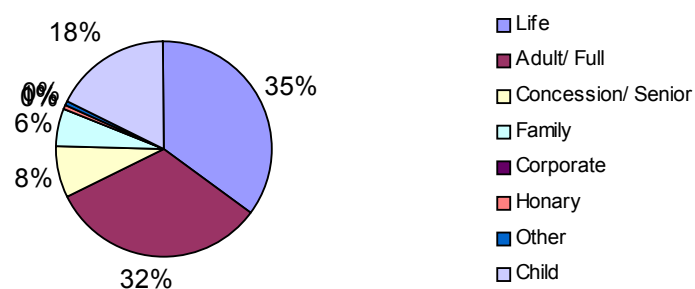


Table 8: Volunteers by State/Territory

	State/Territory RSPCA								Total
	ACT	NSW	NT*	QLD	SA	TAS	VIC	WA	
Shelter	125	156	106	1600	60	158	590	210	3005
Organisation	12	255	28	11	25	21	120	20	492
Fund raising	90	125	132	300	150	55	314	5	1171
Others	12	84	50	0	0	67	146	30	339
Total	239	620	316	1,911	235	301	1,170	265	5057

*Data from Darwin Regional Branch only

Figure 6: Total Volunteers by Category

