

# 2022 - 2023

RSPCA AUSTRALIA

## Annual Report



For their support throughout the 2022–2023 financial year, RSPCA Australia would like to thank:

National Nutritional Partner



National Pet Health Partner



National Adoption Partner



Major National Partner



Our thanks also goes to:



# TABLE OF CONTENTS

MESSAGE FROM THE CEO .....6

MESSAGE FROM THE CHAIR.....8

OUR BOARD ..... 10

WHAT WE DO..... 11

MISSION, PURPOSE, VISION, VALUES & PRINCIPLES ..... 12

STRATEGIC PLAN..... 13

SCIENCE & KNOWLEDGE ..... 14

SHARING ..... 14

ADVOCACY & CAMPAIGNS ..... 18

EDUCATION, COLLABORATION & ENGAGEMENT ..... 21

RSPCA APPROVED FARMING SCHEME ..... 26

SUPPORTING THE FEDERATION ..... 30

FINANCIALS ..... 34





# MESSAGE FROM THE CEO



Welcome to our annual report for 2022-23. This is the annual report of RSPCA Australia – the national office of the RSPCA, who are a small team based in Canberra supporting the wider RSPCA federation in their vital work caring for animals across the country.

Some of the work we do in the national office is quite visible - for example, our **public advocacy** on issues like live sheep export; our **Knowledgebase** which receives over 4 million views each year; and the **RSPCA Approved Farming Scheme**, a leading certification scheme focused solely on improving the lives of farm animals. Some is less visible - such as our work with **government and industry** behind the scenes to improve the lives of animals on topics as diverse (and complex) as wild horse management, painful procedures in farm animals, and commercial kangaroo harvesting.

And of course, there's our work **supporting state and territory RSPCAs** - such as **managing national**

**corporate partnerships and procurement** - helping them care for over 94,000 animals and investigate over 53,000 animal cruelty complaints each year. This includes working with our national partners as they provide generous and much-needed support for events like Million Paws Walk (which this year saw over 30 in-person events and over 16,000 people attend!), helping to achieve close to \$2 million in savings for the RSPCA federation through coordinated procurement activities, and supporting Aussie workplaces to donate more than \$600,000 to state and territory RSPCAs through Workplace Giving initiatives.

An annual report is always a chance to reflect on the year just past - to celebrate our achievements and to acknowledge what hasn't gone our way. In the world of animal welfare, there's always plenty of both. But the annual report is also a chance to acknowledge the progress that's been made over a longer time frame. Sometimes, this involves remarkable change in the way we view animal welfare, the way that we live alongside animals, and how that's reflected in our laws. Sometimes, it can be frustratingly slow progress. More often than not, it's both of these things. And there's no better example of

this than two of our most longstanding animal welfare issues - two issues that we have been campaigning on for decades that are very important to us and to Australians, and two issues where this year there have been long-overdue but promising steps forward.

In an opinion piece published in the West Australian in June, I quoted a Senate report from 1985 about **live sheep export**. It said that if a decision were to be made on the future of live sheep export based on animal welfare grounds, there was enough evidence to stop the trade. That was a few years after the national office of the RSPCA was created - with one of the key reasons for our formation being the need to advocate directly to the Federal Government on issues like this. In the nearly 40 years since then, the animal welfare science has become even clearer that there is no justification for this cruel trade continuing. What social licence the industry ever had - if any - has been lost time and time again.

**When I wrote this message last year, a new Federal Government had just been elected with a promise to end live sheep export.**

Since then, we've seen an independent panel appointed to look into how and when to phase out the trade. Our message has been clear the whole time - we've urged the Government to **legislate an end date in this term of Parliament**, with a timeframe of no more than three years from the passage of legislation. Any further delays risk this trade continuing indefinitely, bringing with it unacceptable welfare risks for Australian sheep.

**But as I write this, we're in a promising position - below, you'll find more information on how this year we've been helping to bring about an end date.**

When you think of animal welfare issues with a long history, it's hard to not think about the use of **barren battery cages**. This post-World War II housing system for layer hens is still in use in Australia, "home" to more than 3 in 10 hens. As you can imagine, the push to phase out these cages because of the severe animal welfare issues they bring has been ongoing for decades. Some jurisdictions have phased out battery cages decades ago - for example, the European Union in 1999. And the writing has been on the wall for just as long in Australia.

After an incredibly lengthy process (more than seven years),

**national Poultry Standards and Guidelines** are finally complete and have been endorsed by state and territory governments, with a phase out of battery cages included. That means we'll finally be seeing an end to battery cages in favour of more humane farming methods, like barn-laid or free-range systems. As I write this, state and territory RSPCAs are working with state and territory governments to ensure we see a phase out as soon as possible, and by the phase out deadline of 2036.

**With a phase out date of 2036 on the table, this means that battery cages will have been in existence for nearly 100 years.**

I'm sure you'll agree that a phase out can't come soon enough.

Of course, this advocacy is just one of the ways in which we work to improve the lives of Australian animals. We work across companion animals, farm animals, animals in sport and entertainment, animals in research, and wildlife. Our work involves providing advice and educational content to consumers (for example, **encouraging Australians to choose non-mulesed wool**, or providing resources to help them **keep their cats safe and happy at home**) and making science-based animal welfare knowledge more accessible (for example through our

**Knowledgebase** and annual **Animal Welfare Seminar**). And in the farm animal welfare space, a key part of this work is the **RSPCA Approved Farming Scheme**, a certification program underpinned by animal-specific and publicly-available standards and a rigorous certification process with comprehensive and regular assessments. While meeting the high bar set by the RSPCA's animal welfare policies isn't always possible due to the realities of commercial farming, each version of the standards brings us closer and closer while continuously raising the bar for farm animals.

As you can see, there's a lot to our work. Read on for a summary of our highlights in 2022-23 - as well as a selection of key developments and activities from across the wider RSPCA federation.

**Rich Mussell**

**Chief Executive Officer  
RSPCA Australia**



# MESSAGE FROM THE CHAIR

The RSPCA Australia Board sets the strategic direction for the work of the RSPCA’s national office. That’s no easy feat, given just how big and complex an area animal welfare is.

There are so many issues affecting billions of animals across countless species, and animals in so many different contexts; whether they’re the companion animals who bring us so much joy, the animals who provide us with food or fibre, or the many native animals we live alongside in the wild.

Our strategic purpose is to make animals’ lives better. We do this through working directly with government and industry, public communication and advocacy, producing and providing educational content, programs like the RSPCA Approved Farming Scheme, and of course by supporting members of the

RSPCA federation in their crucial work caring for animals.

Like with any strategy, the key decisions for me and the Board are about how best to achieve our objectives – what to do and what not to do, and what capabilities need to be in place in order to achieve this.

Our 2022-24 Strategic Plan lays out, at a high level, four strategic goals that guide our work: leading animal welfare thinking, advocating for animals, increasing our effectiveness, and ensuring our sustainability.

In this report, you’ll see examples of how we’ve worked towards those goals this year. As Rich says, some of it is more visible like our national advocacy campaigns, and some of it is less visible but still vitally important, such as our work leading

policy development among the federation or fostering and growing national corporate partnerships.

As I mentioned last year, RSPCA Australia established an **Animal Welfare and Ethics Committee (AWEC)** sub-committee, to make recommendations to the Board on matters including emerging animal welfare issues and animal welfare policy, positions, priorities and advocacy strategies. Part of this has been developing an ethical framework that the AWEC uses to consider animal welfare matters, which has prompted RSPCA Australia to articulate its **values and principles**, as well as reconsider our **vision**. Our new vision – what we’re trying to realise in the world through our work – is that “All animals have a good life”. It’s a simple statement, but one I know resonates strongly with our team. You can read more about our purpose, vision, values and



principles below. I thank everyone, including our state and territory RSPCA colleagues, who participated in the process of developing this purpose, vision, values and principles. Having some clear statements that guide our work and describe what we hold dear and how we operate has been an immensely valuable process and helps us all to navigate the complex world of animal welfare.

Our work across all of these different areas can be viewed through the lens of this purpose, vision, values and principles. Our values in particular are a good framework for deciding what issues we focus on and where we spend our time and resources. For example, two of our biggest advocacy issues – live sheep export and battery cages for layer hens – have been ongoing for decades, but we persist (and are making remarkable progress) because, as our values say, **we never give up**. Our values also say that **we make informed decisions**, so we work tirelessly to understand the latest animal welfare science and to incorporate that into our work.

And, as our values also say, we do what is right for animals over what is easy to do.

No better is that represented through our work with the RSPCA Approved Farming Scheme, an enormous and complex undertaking that is improving the lives of animals on farm every day. This year, the Board and I have been particularly focused on providing strategic oversight of the RSPCA Approved Farming Scheme. We want to ensure that our farm animal welfare strategy is as effective as possible in delivering better lives for Australia’s farm animals.

While we primarily focus on the work of the national office, RSPCA Australia, in this annual report, it’s also a chance to highlight the important work of the RSPCA federation. You can read more in detail in each state and territory RSPCA’s annual reports, available on their websites, but it’s important for us to include it here as the RSPCA federation, at its core, is about working together collectively to make animals’ lives better. That’s why in this annual report

you’ll see **stories from across the federation**, including local advocacy around issues like pets in rentals and greyhound racing, important programs that help vulnerable Australians care for their pets, and much-needed new capital infrastructure that helps RSPCA staff care for more animals and do their best work.

2022-23 marks my last full year as Chair of the RSPCA Australia Board. It has been a privilege to work with Australia’s leading animal welfare organisation and to provide strategic oversight for such valuable and meaningful work. I would also like to thank our volunteer Directors – a combination of independent directors and nominated representatives from state and territory RSPCAs – for their continued work and for the passion and expertise that they bring to the RSPCA Australia Board.

**Dr Richard Russell**  
Chair, RSPCA Australia

# OUR BOARD

The RSPCA in Australia is a federation, with eight autonomous state and territory RSPCAs who are members of the national body, RSPCA Australia. Each of these nine entities is governed by a board. The Board of RSPCA Australia comprises one nominated director from each of the eight member Societies, plus a number of independent recruited directors.

Board as of 30 June 2023:



**Dr Richard Russell**  
Independent Chair



**Mr Ian Cowie**  
Nominated Director,  
RSPCA WA



**Mr Bernie Delaney**  
Nominated Director,  
RSPCA Victoria



**Mr Rob DiMonte**  
Nominated Director,  
RSPCA SA



**Ms Jan Edwards**  
Independent Director



**Ms Alexandra Garrett**  
Nominated Director,  
RSPCA Tasmania



**Ms Jo McKennarley**  
Nominated Director,  
RSPCA Queensland



**Mr Danny Moore**  
Nominated Director,  
RSPCA Darwin



**Mr Mark Steele**  
Nominated Director,  
RSPCA NSW



**Ms Alexandra Wedutenko**  
Nominated Director,  
RSPCA ACT

# WHAT WE DO

RSPCA Australia, as the federation’s national body, is a leading source of animal welfare science, and works with government and industries to improve animal welfare across a range of issues concerning Australia’s animals.

The RSPCA’s member Societies in each state and territory operate animal rehoming centres, investigate and prosecute animal cruelty complaints, advocate to improve the lives of animals, and educate the community on animal welfare and responsible pet ownership.



At RSPCA Australia, our work includes:

Providing science-based animal welfare information to increase knowledge & understanding, including the RSPCA Knowledgebase, quarterly Science Update, and annual Animal Welfare Seminar.



Developing and providing valuable advice for businesses and consumers about higher welfare food and consumer expectations.



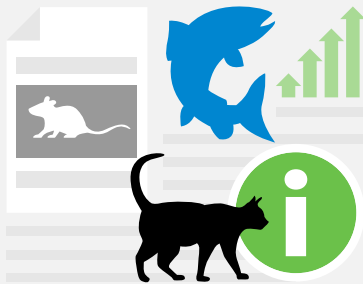
Operating the RSPCA Approved Farming Scheme, improving the lives of millions of farm animals by implementing detailed higher welfare standards and a rigorous certification process which includes on-site assessments.



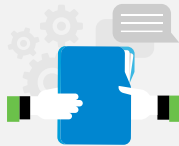
Supporting the wider RSPCA federation in their important work caring for and protecting animals, including coordinating national events and initiatives, managing corporate partnerships and sponsorships and leading the development and review of RSPCA policy.



Acting on animal welfare issues the community cares about, mobilising our supporters to advocate to governments and industries to prioritise and improve animal welfare.



Providing advice and engaging with industry and governments to improve animal welfare standards and industry practice and promote legal reform.



Advocating for the welfare of animals across a range of sectors and issues, including companion animals, farm animals, animals in sport and entertainment, animals in research and teaching, and wild animals.
















# MISSION, PURPOSE, VISION, VALUES & PRINCIPLES

This year, we reaffirmed RSPCA Australia’s mission, purpose, and vision – as well as formally identifying and articulating our values and principles. These are the statements that guide as we work to improve animals’ lives.

|         |  |
|---------|--|
| Mission | To prevent cruelty to animals by actively promoting their care and protection. |
| Purpose | To make animals’ lives better.   |
| Vision  | All animals have a good life.  |

| Values  | Principles   |
|---|--|
|  <b>Compassion:</b> We believe a kind approach benefits all.               |  We consistently align our actions with our purpose and vision.   |
|  <b>Courage:</b> We do what is right for animals over what is easy to do. |  With animals’ welfare at the forefront of our thinking, we act in their best interests – no matter how challenging.     |
|  <b>Integrity:</b> We earn the trust upon which our work depends.        |  We are transparent, explaining what we do, why we do it, where we are and where we are heading.                        |
|  <b>Knowledge:</b> We make informed decisions.                           |  We strive for continuous improvement – knowing that small steps are progress, even as we embrace the longer-term view. |
|  <b>Tenacity:</b> We never give up.                                      |  We work collaboratively to achieve the best outcomes.  |
|   |  We recognise and respect the intrinsic dignity of all.   |

## Objectives of the RSPCA in Australia

- To prevent cruelty to animals by ensuring the enforcement of existing laws at federal and state level.
- To procure the passage of such amending or new legislation as is necessary for the protection of animals.
- To develop and promote policies for the humane treatment of animals that reflect contemporary values and scientific knowledge.
- To educate the community with regard to the humane treatment of animals.
- To engage with relevant stakeholders to improve animal welfare.
- To sustain an intelligent public opinion regarding animal welfare.
- To operate facilities for the care and protection of animals.

# STRATEGIC PLAN 2022-24

STRATEGIC PURPOSE: **TO MAKE ANIMALS’ LIVES BETTER**

1

LEADING ANIMAL WELFARE THINKING

AMBITIONS

- We search out and provide the best evidence for creating and informing policies, standards and law
- We share knowledge and inform society on what is good animal welfare
- We integrate animal welfare into big picture ideas

OUTCOMES & MEASURES

1.1

Demonstrated leadership on animal welfare policy issues

1.2

Increased societal awareness of good animal welfare

1.3

Interconnections between animal welfare, human wellbeing and their physical and social environment is recognised in policy

1.4

Updating the evidence base for RSPCA Approved Farming Scheme standards

3

INCREASING OUR EFFECTIVENESS

AMBITIONS

- We focus our work on the priority animal welfare issues in Australia
- We maximise the efficiency of our operations
- We collaborate with our member Societies and support each other

OUTCOMES & MEASURES

3.1

Deeper engagement on priority issues

3.2

Simplifying processes to achieve efficient and effective federation outcomes

3.3

Demonstrated member Societies engagement on national projects

3.4

Enhanced RSPCA Approved Farming Scheme systems and processes

2

ADVOCATING FOR ANIMALS

AMBITIONS

- We advocate for positive changes in attitudes, behaviours, practices and laws
- We create and leverage opportunities and work with others to maximise impact

OUTCOMES & MEASURES

2.1

Changes in society which make animals’ lives better

2.2

Improved support and engagement in advocacy programs

2.3

Increased quality of life for farm animals under the RSPCA Approved Farming Scheme

4

ENSURING OUR SUSTAINABILITY

AMBITIONS

- We position RSPCA Australia for future relevance and success
- We support, develop and inspire our people
- We have an open, inclusive and compassionate culture
- We have a viable funding base that provides the resources we need

OUTCOMES & MEASURES

4.1

Improved recognition and trust in the RSPCA brand

4.2

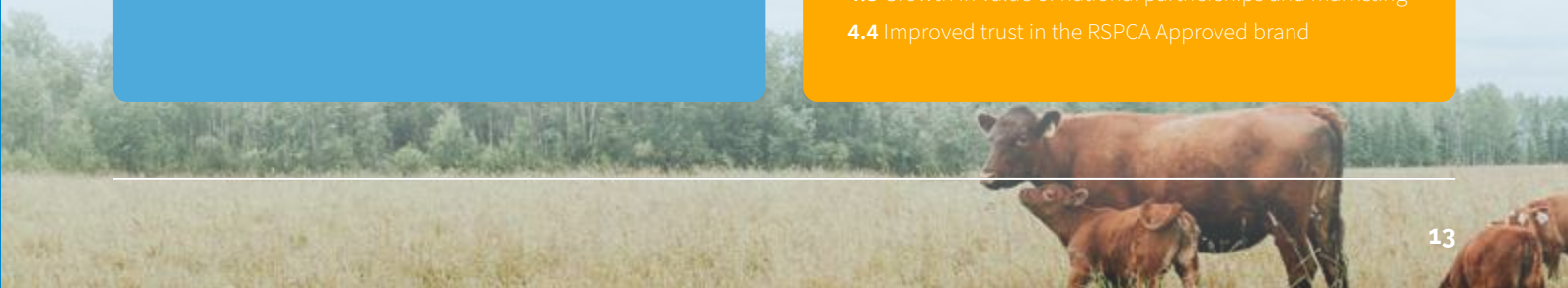
Increase in staff wellbeing and engagement

4.3

Growth in value of national partnerships and marketing

4.4

Improved trust in the RSPCA Approved brand



# SCIENCE & KNOWLEDGE SHARING

The RSPCA is an evidence-based organisation, and our work is always guided by scientific principles and research. This helps us to determine the impact of human actions on animals - be they farm animals, companion animals, working animals, animals used in research, entertainment, sport, or animals in the wild - and how we can create opportunities for animals to experience good welfare.

A evidence-based approach is crucial to ensuring that we can fulfill our strategic purpose of making animals' lives better.

## THE RSPCA KNOWLEDGEBASE

In 2022-2023, we continued to maintain and update the [RSPCA Knowledgebase](#), Australia's most trusted source of animal welfare science, advice and information. **This year we published 20 new articles and updated 121 more.** The majority of these articles are about how to best care for companion animals as this is where community interest and demand for information is strongest, but the Knowledgebase is also a trusted repository of valuable information about farm animals, animals in sport, wildlife and more. **We also began the process of refreshing and updating new content on a wider range of companion animal species – from rabbits to rats to reptiles, and more!** We also know that the community looks to the Knowledgebase to find out more about specific issues and understand the RSPCA's policies and positions.

4,066,043

KNOWLEDGEBASE VIEWS THIS YEAR

702

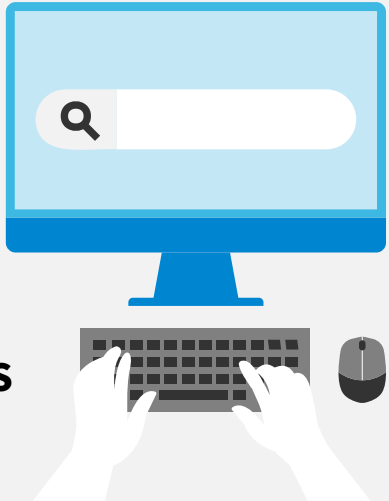
KNOWLEDGEBASE ARTICLES TOTAL

20

NEW ARTICLES THIS YEAR

121

UPDATED ARTICLES THIS YEAR



## THE TOP FIVE ARTICLES VOTED 'MOST HELPFUL' THIS YEAR:

- 1 How do I take care of tadpoles?
- 2 How should I keep and care for my goldfish?
- 3 What should I feed my guinea pigs?
- 4 What is the most humane way to euthanase aquarium fish?
- 5 What should I feed my pet rat?

## THE TOP FIVE MOST VIEWED ARTICLES THIS YEAR:

- 1 My cat is being aggressive towards my other cat, what should I do?
- 2 My cat is being aggressive towards me, what should I do?
- 3 Why is my cat urinating inappropriately?
- 4 What should I feed my guinea pigs?
- 5 How should I introduce my new dog or puppy to the family cat?

## JUST SOME OF THE NEW ARTICLES PUBLISHED:

- 1 Is fertility control a humane option for managing peri-urban kangaroos?
- 2 What are some of the painful procedures experienced by pigs on farm?
- 3 How many animals are used in research in Australia?
- 4 Should I stable my horse?
- 5 Do slow-growing meat chickens have better welfare than fast-growing meat chickens?



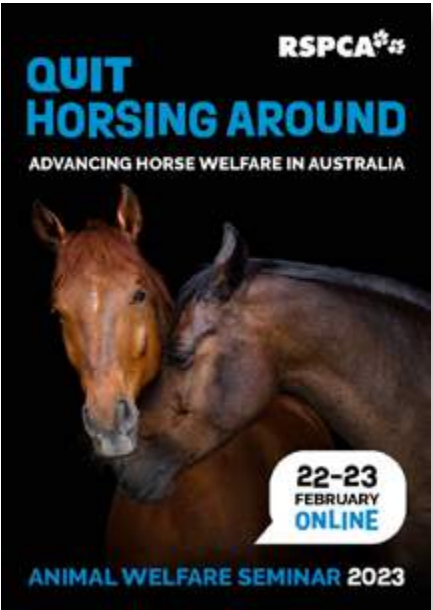
2023 ANIMAL WELFARE SEMINAR: QUIT HORsing AROUND – ADVANCING HORSE WELFARE IN AUSTRALIA

In February, we hosted our annual [Animal Welfare Seminar](#), this year with a focus on horse welfare. This was an important topic for us because we know that horses play an important role in many people’s lives and in many different contexts including competition, racing, leisure, therapy, and companionship – and throughout their lifetime, these remarkable animals may be subjected to various interventions relating to their care, housing, training, exercise, and general management.

This Seminar brought together a diverse range of stakeholders to share knowledge, the current science, and thoughts on the way forward to help

ensure all horses have a good quality of life - no matter their connections or relationships with people. The Seminar saw over 700 people register, with positive feedback and some lively discussion on many horse welfare issues. These are issues which are becoming more and more central to the RSPCA’s work, as there is still a long way to go to improve the quality of life for horses.

Work is underway on the 2024 Seminar to be held [online](#) on 21 & 22 February and will delve into our current knowledge of animals’ needs and wants, and revealing opportunities to improve our relationship with animals who share our lives.



RSPCA POLICIES & POSITION PAPERS

In 2022-23, the RSPCA reviewed a number of its policies and position papers. These documents are reviewed by the RSPCA Australia Science and Policy team and consultation occurs with all RSPCA member Societies to ensure consistent support for the final statements. This year, the review of [Policy F – Transportation of Animals](#) was completed. We also began review of [Policy A – Companion Animals](#) and [Policy E – Wild Animals](#) and are developing a position paper on Cat Containment which has been a topic of interest across the country.

RSPCA SCIENCE UPDATE

Every quarter, RSPCA Australia’s Science and Policy team produces the [Animal Welfare Science Update](#). The Science Update provides summaries of some of the most relevant and interesting scientific papers and reports on animal welfare published in the previous few months.

Our Animal Welfare Science Update now has over 2,700 subscribers, both in Australia and overseas, who are largely made up of industry, government, researchers, NGOs, and members of the public interested in all manner of animal welfare issues.

Just some of the topics covered in this year’s Science Updates:

- |  |   |
|--|---|
| Better care for snakes   | Assessing the welfare impact of wildlife trapping                   |
| Steps to help cats cope with air travel                                    | Pugs are at extreme risk of life-altering health problems           |
| Concerns about farm animal welfare can help drive sustainable food choices | A ‘no tail’ handling policy improves laboratory mouse welfare       |
| A survey of horse owners suggests an ‘over rugging’ issue in Australia     | A road map for the transition away from extreme confinement of sows |

EDUCATION

Each year RSPCA Australia offers three scholarships to encourage students to take an active interest in animal welfare issues, to support animal welfare research that might not otherwise attract funding, and to promote the objectives of the RSPCA within the research community.

RSPCA Australia Alan White Scholarship for Animal Welfare Research

The Alan White Scholarship is for students in Australian tertiary institutions for the funding of original research aimed at improving the welfare of animals in Australia.



Victoria Condon

Outcomes of feral horse management methods for horses, people and the environment - a One Welfare approach

RSPCA Australia Sybil Emslie Animal Law Scholarship

The \$1,000 annual scholarship is awarded to a law student or lawyer who has a strong academic record and a commitment to the practice of animal law through active and substantial engagement with animal law and animal protection organisations and initiatives.



Morgan Stonebridge

Hugh Wirth Humane Animal Production Scholarship

This scholarship is for individual research projects that related to the development of humane alternative farm animal production systems.



Natarsha Williams

Can an Animal Welfare Risk Assessment Tool (AWRAT) assist in predicting instances of poor livestock welfare on farms?

RESEARCH AND PRESENTATIONS

Our Science and Policy team also contribute to the development and publication of important peer-reviewed research, deliver presentations at universities and events, and participate in panel discussions at conferences, to ensure the latest animal welfare knowledge is communicated as widely as possible.

Some highlights from this year’s publications and presentations include:

- Dixon S, Evans D, Vindevoghel T, Ward MP, Quain A (2023) [Behaviours expressed by rodeo calves during different phases of roping](#). *Animals* 13(3), 343.
- Evans D. Behavioural assessment of animals used in rodeos: Research challenges. 2023 ANZCVS Science Week, Gold Coast
- Evans D. Thinking outside the box: Studying animals without using animals. 2023 ANZCCART Conference, Melbourne





# ADVOCACY & CAMPAIGNS

The RSPCA advocates for the welfare of animals across a range of industries, contexts, and issues. We regularly mobilise our hundreds of thousands of supporters to join us in driving tangible change that will positively impact animals and speak directly to government and industry to influence social and political change.

Our work to protect the welfare of animals is ongoing, and it's thanks to the community's support that we've been able to focus on so many different and complex issues over the past year. With independent research this year showing that 78% of Australians consider animal welfare extremely or very important, this support from the community is more important than ever.

## SAYING BYE BYE TO BATTERY CAGES

It seems like our work to phase out of barren battery cages has been going on for an impossibly long time – because it has! But it's an important issue that's close to our hearts – and very close to the hearts of our valued supporters.

**“We’ve been encouraged by the response of 22,857 Australians who have spoken-up for layer hens”**

With the review of national Poultry Standards and Guidelines finally complete in August 2022 after more than seven long years, the RSPCA was pleased to welcome news of a

proposed phase out of battery cages in the final standards.

But, as we and concerned community members have said loud and clear, the choice of a date so far into the future (2036) means millions of layer hens will continue to suffer their lifetime in barren conditions. And in any case, until the standards are fully implemented by all states and territories, there's no certainty for these hens.

Throughout this, we continue our [Bye Bye Battery Cages campaign](#), encouraging territory jurisdictions to implement the phase out as soon as

possible and no later than 2036. We've been encouraged by the response of 22,857 Australians who have spoken up for layer hens. And of course, we continued to educate the community, including via our social media channels: by raising awareness on the different types of egg production, what better layer hen welfare looks like, and why battery cages have to go.

Today, we are developing a long-term strategy to ensure all barren battery cages are phased out in all Australian states and territories by 2036 or earlier. This date is a long time away, but we will not stop advocating until all layer hens are cage free in Australia.

## MULESING

This year we've ramped up our efforts to [increase awareness around mulesing](#), a serious welfare issue affecting millions of Australian lambs every year. We know it's simply unacceptable to continue breeding wrinkly Merino sheep that are susceptible to flystrike and require mulesing or other breech modification procedure to manage flystrike risk.

We also know there is a more humane and effective way forward, and that is to transition flocks to plainer-bodied breeds that are naturally resistant to flystrike. This solution takes just a few years to implement, and we have continued to ask wool industry leaders to assist and encourage wool growers to transition their flocks.

This year, we've communicated with conscious consumers through educational blogs and our social media channels, to help the public understand what mulesing is and what they can do about it – including choosing non-mulesed wool products.

We are already seeing meaningful change; many well-known fashion brands are now sourcing non-mulesed wool or committing to transition away from mulesed wool. However, there is still work to do, as most wool growers are still mulesing (albeit with pain relief) and there's a long way to go before Australia has an entirely mules-free sheep flock.



## AN END ON THE HORIZON FOR LIVE SHEEP EXPORT

Things have been looking more and more promising for Australian sheep since the 2022 federal election.

Despite repeated updates to regulation over the past 5-10 years, the trade has been plagued by decades of ongoing and unfixable animal welfare issues. That's why we were heartened this year to see this Federal Government reaffirm their commitment to end the live sheep export trade by sea from Australia for good. [We launched a campaign to #LegislateTheDate](#) - asking the Government to set an end date and enshrine it in legislation in this term of Parliament (before the next Federal election).

Our supporters know that ending the live sheep export trade has been one of the top priorities for the RSPCA for decades, and the wider Australian community shares our concerns, with **new polling** showing that even in Western Australia – the nation's base for live export by sea – [more than 7 out of 10 residents](#) support the phase out policy.

Following the Government's announcement of an independent panel to determine **how and when the phase out should take place**,

we called on our supporters to join in the consultation process through a dedicated campaign, which resulted in over 7000 submissions in a very short period. It's another sign of just how passionately opposed to live sheep export the overwhelming majority of Australians are.

**“More than 7 out of 10 residents support the phase out policy”**

We're calling for a legislated end date this Parliamentary term (so before the 2025 election), a short-term phase out period of no more than three years from the passage of legislation, and measures to safeguard animal welfare in the meantime - avoiding adverse sheep welfare impacts and incentivising the transition to alternative markets as part of any structural adjustment package for producers.

We are at a pivotal point in Australian history - at no other time have we been this close to ending the live sheep export trade for good. As we look towards the next year, we will continue to focus on achieving a legislated end date and working with government and stakeholders to transition away from this cruel and unfixable trade.



## CALF ROPING

This year we ramped up our push to see an end to [calf roping](#) across Australia – one of the most terrifying and cruel practices in rodeos and one in which we know there is ongoing community and media interest.

[We contributed to a new study published in a leading international journal for animal welfare](#) –

demonstrating further evidence that calf roping in rodeos is terrifying and distressing for the animals involved throughout all phases of this cruel event – from the calf being chased, lassoed, caught and restrained, right through to being released. And in February, we saw [new polling commissioned by RSPCA that shows what Australians really think about rodeo calf roping](#).

We contributed to the review of the Australian Veterinary Association's strengthened rodeo policy, which states that the Association does not support calf rope-and-tie events nor steer wrestling and highlights concerns regarding the use of flank straps and spurs in bucking events.

In collaboration with RSPCA NSW, we urged the Eurobodalla Council to cancel the permit for the Morayu Rodeo and even though we were not successful, several councilors opposed granting the permit. It's a sign of the growing community awareness about rodeos and the recognition that these events pose significant animal welfare issues.

We were also successful, together with RSPCA WA in convincing a venue owner to insist that calf rope-and-tie events be withdrawn from the program of a major rodeo. Furthermore, with support from RSPCA WA, our presentation to several WA MPs who are very concerned about the animal cruelty associated with rodeos was very well received.

We will continue to speak up about calf roping until this distressing event is stopped. No animal should be subjected to pain, stress and potential injury for the sake of human entertainment.

Some of the key survey findings:

**61%**  
of Australians are concerned about the welfare impacts of calf roping.

This includes high numbers of Australians living in rural or country areas where these rodeos are held

such as  
**58%**  
in rural Queensland

and  
**62%**  
in WA outside of Perth.

more than  
**3 in 5**  
Australians support their state or territory placing a ban on calf roping.

**45%**  
of Australians would be less likely to support a business that sponsors a rodeo where calf roping takes place compared to 15% who said they would be more likely.



## EDUCATION, COLLABORATION & ENGAGEMENT

Whether it's providing advice to consumers about choosing higher welfare products or responsible pet ownership, participating in industry or government working groups, providing submissions into inquiries, or producing resources for businesses to improve their animal welfare policies, working collaboratively with stakeholders, and positively describing the change we seek is a key part of our ethos at the RSPCA. It might be a website, a set of resources, or a seat at the table – but the key similarity is we work collaboratively and constructively to achieve common goals, all in animals' best interests.



### LOVE IS BLIND

This year, we continued raising awareness of the serious health and welfare issues associated with certain dog breeds. We continued to highlight [Love is Blind](#), a joint initiative of the Australian Veterinary Association and the RSPCA that aims to raise public awareness about the animal welfare problems caused by exaggerated physical features such as brachycephaly, abnormal and short limbs, and excessive skin wrinkling, and how these problems can be prevented. We have also been working with international colleagues to discuss new ways to raise awareness around the world as the popularity of these breeds continues and we work to find solutions to ensure the breeding of happy, healthy animals.

### PET STERILISATION PROGRAM

In Western Australia, 2022-23 saw RSPCA inspectors deal with many issues that could be prevented if more people sterilised their pets. These range from dealing with stray cats and dogs who escape their yards and are found roaming streets, to pets suffering from serious medical conditions that are left untreated due to lack of finances.

Hazelnut is a perfect example of why desexing your pet is so important. At four-years-old, Hazelnut had seven new puppies.

Seven hungry mouths to feed, when she could barely feed herself. Hazelnut was malnourished and anaemic.

This is the sad reality of irresponsible backyard breeding that our inspectors see every day. That is why RSPCA WA offered 75% off the cost of pet sterilisation to concession card holders last year in the pilot Pet Sterilisation Program.

Luckily for Hazelnut, she was sterilised and is now a healthy, happy pooch!







SAFE AND HAPPY CATS

Keeping your cat safe at home reduces the risk of them getting sick, lost, or injured by cars, dogs, or other cats. Cats need a home that safeguards their physical and mental health and provide them with the opportunity for positive experiences and good welfare.

This year we continued to promote our Safe and Happy Cats microsite – and were pleased to get over 8,815 views – and develop and promote resources to ensure the community can keep their cats safe and happy at home, whether indoors with secure outdoor access or purely indoors.



KEEPING CATS SAFE AT HOME:

In New South Wales, **the Keeping Cats Safe at Home Education Program** was officially launched at schools across the New South Wales Northern Rivers region. Between the 8th and 12th of May, the program educated over 500 students from six different schools in the Byron Shire Council, Tweed Shire Council, and Kyogle Council about keeping their cats safe at home. It was a very busy trip visiting 6 schools

and speaking to 508 students in total! The education presentation taught students how to care for cats and the importance of desexing, how to keep cats safe at home, and the impacts cats have on our native wildlife. Through engaging and interactive activities, students learned about cats’ unique behaviours and how to be responsible cat owners.

CAGE FREE & PROUD

It’s good to see positive steps toward a legislated phase out of battery cages – but that’s not the only way we work to improve layer hen welfare. With eggs increasingly top of mind for many Australians (with 7 out of 10 Australians preferring to choose products with cage-free eggs), this year we continued to proactively develop resources to assist our supporters to shop consciously, and most importantly when it comes to eggs – cage free. There is no reason for individuals or businesses to wait for the 2036 phase out of cage eggs from their shopping baskets or when eating out, and this year we ramped up our efforts to show just how easy the transition can be and cut through the noise (and the nonsense!). Our Cage Free & Proud directory now boasts 93 forward-thinking brands that have switched or are committed to using cage-free eggs.

RSPCA Australia was represented this year on the following government and industry committees and working groups:

- |   |  |  |
|---|--|--|
| The Animal Welfare Collaborative Advisory Panel   | Australian and New Zealand Council for the Care of Animals in Research and Teaching Openness Agreement | National Domestic Cat Management Working Group   |
| Animal Welfare Standards & Guidelines for the welfare of livestock at slaughtering establishments | Kangaroo Island Feral Cat Eradication Program Steering Committee                                       | National Animal Welfare Research Development & Extension Strategy Steering Committee   |
| Australian Beef Sustainability Framework Consultative Committee                                   | Kangaroo Island Feral Pig Eradication Program Steering Committee                                       | Standards Australia committee for the Australian Standard for the training and use of privately contracted security and detection dogs |
| Australian Maritime Safety Authority Livestock Advisory Committee                                 | Live Export Animal Welfare Working Group   | WA Feral Cat Research Advisory Group   |
| Dairy Industry Sustainability Consultative Forum  | National Feral Horse Standard Operating Procedures Working Group                                       |  |
| National Feral Cat Taskforce  |  |  |

PETS IN RENTALS

In South Australia, the nation-wide rental shortage has caused great hardship for many pet owners who rely on rental accommodation, with South Australia experiencing some of the lowest availability of pet-friendly rentals.

Sadly, the number of people stating ‘no pets’ rentals’ as the reason for surrender has tripled in the last three years. RSPCA South Australia has campaigned hard on this issue for years and is urging parliament to support the reforms so that four-legged family members stay with their families.

In June this year, the State Government announced proposed reforms to South Australia’s Residential Tenancies Act to level the playing field for renters with pets, which has already occurred in Queensland, Victoria, the NT and the ACT.



ADOPTION STORY

Clayton was found by RSPCA ACT inspectors abandoned and tied to a pole. He was luckily taken into the care of RSPCA ACT where he remained in the shelter for 434 days. The team and staff never gave up hope for Clayton and they did everything in their power to help him be able to put his best paw forward with his behaviour whilst keeping him physically and mentally active and healthy. In good news, Clayton has now found his new home and is as happy as ever.





AWARE: FREE EDUCATION RESOURCES

State and territory RSPCAs continued to develop and promote [AWARE \(Animal Wellbeing, Awareness, Responsibility and Education\)](#) - a free educational program created for teachers, parents and educators to teach young people about animal welfare. RSPCA AWARE includes ready to use resources that provide real life, meaningful contexts for learning.

The student's educational portal has been designed to support children's learning about animal

welfare and responsibility towards animals, whilst helping to foster a sense of respect, understanding and compassion for all living creatures – be they companion animals, farm animals or wildlife.

The teacher's portal provides innovative teaching and learning resources on animal welfare that are aligned with the Australian Curriculum and fit easily into classroom programs. Did we mention it was free? [Check it out!](#)

VACCINATION DRIVE

This year, RSPCA Western Australia hosted their first ever Vaccination Drive in May, with 77 free vaccinations given to pets in need.

Across two events, dog and cat owners were able access free primary vaccinations, plus a booster vaccination, to protect

their furry friends against serious and sometimes life-threatening diseases, such as parvovirus and cat flu.

The drive aimed to help pensioners and concession cardholders who were struggling to make ends meet.



WILDLIFE ER

This year, an exciting new television series launched – Wildlife ER!

The series showcased Australia's busiest Wildlife Hospital based at [RSPCA Queensland in Brisbane](#) and features animals rescued, treated in the hospital, rehabilitated, and released.

Last year over 27,000 animals required care at the Queensland Wildlife Hospital. Most of the patients were victims of habitat loss, disease, road trauma, dog attacks or natural disasters. To think ten years ago the same hospital was treating around 8,000 animals a year!

The dedicated team of professionals and volunteers worked around the clock to save vulnerable and endangered species. The series is a great chance to see what goes on behind the scenes at such a busy animal hospital!



SOME OF OUR NOTABLE SUBMISSIONS THIS YEAR INCLUDE:

- Australasian Veterinary Boards Council Competencies

Tasmanian Government 10 Year Salmon Plan

Approved Arrangements Pty Ltd Standards Committee (live export)

Queensland Commercial Macropod Harvesting Plan

Adequacy of Australia's Biosecurity Measures and Response Preparedness – Foot and Mouth Disease

Australian Extinction Crisis

National Heavy Vehicle Regulator Review of Livestock Loading

Proposed Amendments to the Poisons Standard

AgriFutures Thoroughbred Horses Program Research Development & Extension (RD&E) Plan

Horse Transport Welfare Standards and Guidelines

Veterinary Education Review

National Draft Guidelines for Registered Establishments (RE) for the Export of Live Animals by Sea

Joint Contribution to Australian National Audit Office's (ANAO) Performance Audit of Australian Wool Innovation Limited

Australian Standard Meat Processing

Managing Effluent in the Livestock Supply Chain

Rabies Risk Review

Inquiry into Food Security
- Review of Communication and Engagement in Live Animal Export Regulation

Animal Welfare and Australia's Potential Trade Agreements with Gulf Corporation Council Countries

Survey Response to Australia's Animal Sector Antimicrobial Resistance Draft Action Plan

Eurobodalla Council Rodeo Permit Review

Tasmanian Salmon Industry Plan Draft

Proposed Amendments to Export Control (Animal) Rules

Pre-Budget Submission

Inquiry into Australia's Disaster Resilience

Exporter Supply Chain Assurance System Review

Review of the National Wool Declaration

Proposed Inspector-General of Animal Welfare

Impacts and Management of Feral Horses in Australian Alps

National Feral Deer Action Plan

Census Topic Consultation

Organic Standard Analgesics

Phase Out of Live Sheep Export

Egg Powder Import Review





# RSPCA APPROVED FARMING SCHEME



The RSPCA Approved Farming Scheme works closely with dedicated farmers and forward-thinking brands to make a positive impact on the lives of Australia’s farm animals. More than 5 billion hens, pigs, meat chickens, turkeys, and farmed Atlantic salmon have benefitted from higher welfare conditions since the program began.

The RSPCA Approved Farming Scheme is a certification program underpinned by **animal-specific and publicly available standards** and a **rigorous certification process** involving **comprehensive assessments** by specially trained RSPCA Assessors.

Now in its 27th year, the **RSPCA Approved Farming Scheme** continues its work to improve the quality of life for Australia’s farmed animals and raise the bar for farmed animal welfare.

**Vision** A future of higher welfare farming

**Mission** To improve the quality of life for farmed animals.

With these goals in place, we will continue to strive for the balance where higher-welfare farming is the rule rather than the exception. For more information about the RSPCA Approved Farming Scheme and its impact check out [RSPCA Approved](#) online.



## CONTINUING TO ENSURE THE STANDARDS ARE MET

The RSPCA Australia Certification Body **conducted a total of 1094 assessments on site and remotely** during the 2022/2023 financial year. This is a result that simply couldn’t have been achieved without the cooperative efforts of our participating Producers, who continue to prioritise animal welfare and remain committed to rearing their animals to the detailed requirements set by the Scheme.

The RSPCA Approved Farming Scheme has standards for layer hens, pigs, meat chickens, turkeys, farmed Atlantic salmon and non-replacement dairy calves and these standards underpin the work of the Scheme. They are a detailed, evidence-based, and animal-specific list of requirements that Producers must meet to achieve and retain RSPCA Approved certification. With an average of 370 requirements per standard they focus on maintaining better welfare throughout the life of

the animal, including a humane death when the time comes. The standards are developed by the RSPCA Australia expert Science and Policy team after a lengthy and comprehensive consultation process and are regularly reviewed to make sure they are up to date with current animal welfare science and developments in Australian farming. At the time of writing, the team has commenced the review of the standards for layer hens and farmed Atlantic salmon.



## ENCOURAGING A MOVE TO HIGHER-WELFARE FOOD

A big part of the RSPCA Approved team’s work is engaging with retailers and the food industry to encourage a transition to higher welfare products and uptake of RSPCA Approved certification. In 2022-23, the team held **134 meetings** with various food companies to discuss what they can do to improve animal welfare in their supply chains and to offer consumers higher welfare choices – including by sourcing products with RSPCA Approved certification.

From these meetings, the range of RSPCA Approved products has continued to grow. **Barossa Fine Foods** launched a range of RSPCA Approved pork and chicken products for their high-

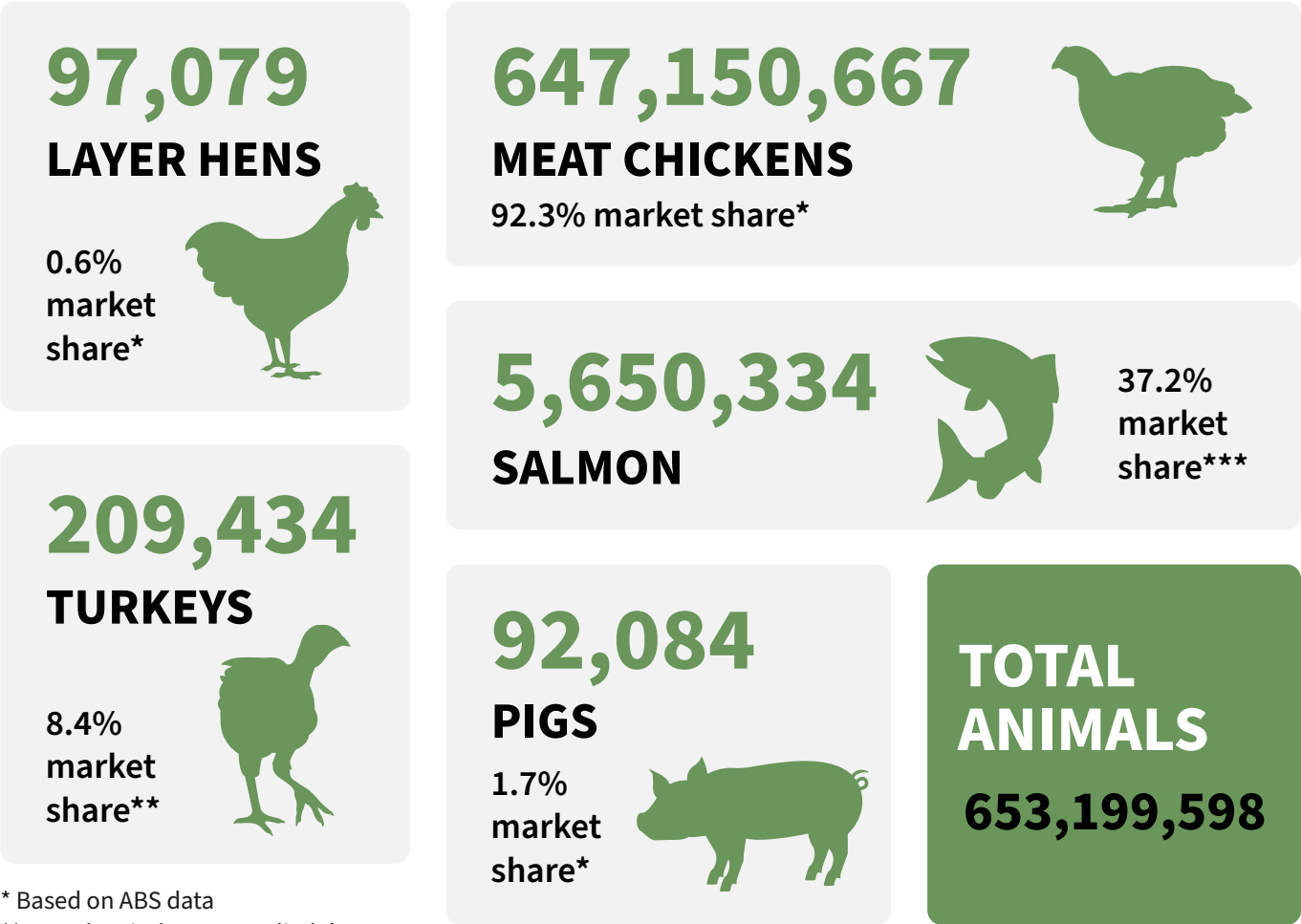
quality smallgoods range available exclusively at Woolworths. **The Sporting Globe** and **TGI Friday’s** both transitioned to sourcing RSPCA Approved chicken across their menus. National brand **Ingham’s** officially launched as an RSPCA Approved Licensee, having already been a Producer with RSPCA Approved certification. National quick-service favourites Schnitz and Soul Origin moved to sourcing RSPCA Approved chicken, and we welcomed La Ionica onboard in June. And excitingly this year, making another step forward for animal welfare, Woolworths launched **Woolworths Slow Raised Whole Chicken** – a slower-growing chicken product and a welcome

addition to their existing higher-welfare chicken range. More than ever before, consumer awareness and demand are driving producers to demonstrate they are meeting better animal welfare standards. The RSPCA Approved Farming Scheme provides a dedicated, welfare focused mechanism for brands to source certified products, and use of a logo so that their customers can know at a glance that the products come from Producers who are regularly assessed and certified against RSPCA Approved standards.



RSPCA APPROVED IMPACT

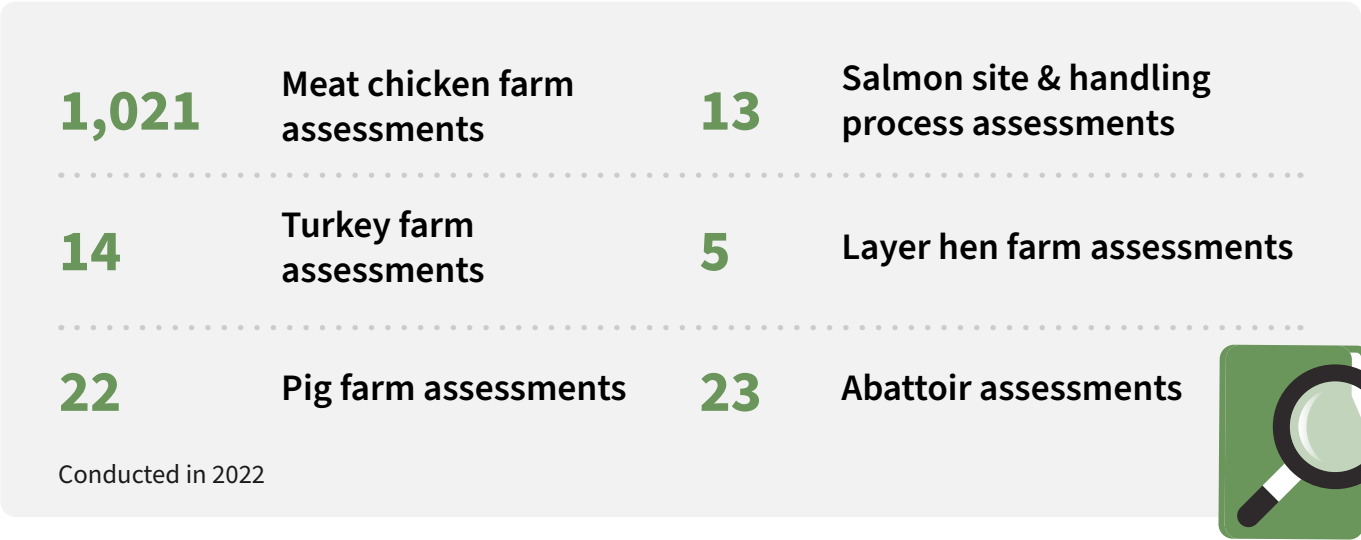
Animals raised to the standards in 2022:



\* Based on ABS data  
\*\* Based on industry supplied data  
\*\*\* Based on ABARES/FRDC data

Note: No producers have farmed to the RSPCA Standard for dairy calves

OUR ASSESSMENTS



KNOWLEDGE AND UNDERSTANDING OF RSPCA APPROVED

The RSPCA regularly seeks to understand public perceptions on a range of animal welfare issues and our work. Every few years, market research is conducted by McCrindle, which helps to shape the goals of awareness and education that we set, as well as inform how we tailor our communications about the Scheme and farm animal welfare.

In our most recent survey, conducted in 2022, the research found that **73% of Australians believe that animal welfare is an important consideration when purchasing food products**, increasing five percentage points from 2018. This increase is on trend with the rise in conscious consumers and the growing demand for responsibly sourced animal-based products.

The survey also found that more people than ever are seeking products with

the RSPCA Approved certification, with **3 in 5 grocery buyers actively looking for the RSPCA Approved logo** – a 14 percentage point increase from 2018. This shows a steady increase in recognition of RSPCA Approved, and the logo being an important factor in purchasing decisions. We hope to see this number continue to grow, as more Australians recognise the importance of farmed animal welfare, and better understand how RSPCA Approved works to improve this beyond simply what's legally required.

Overall, it's encouraging to see the proportion of Australians believing animal welfare is important and actively making conscious choices to support higher-welfare farming, increase year on year since the RSPCA Approved Farming Scheme began.



LOOKING FORWARD



A big project for 2022 has been a review of the RSPCA Approved Farming Scheme's business plan for 2020-2025, which was written prior to the pandemic.

Several key aspects of the Scheme were reviewed as part of this, including the program's animal welfare goals, structure, and capacity to grow and develop for coming years. This review and revision of our business plan also resulted in the development of a new vision – **a future of higher-welfare farming** – and a new mission – **to improve the quality of life for farmed animals**.

At the time of publication, the RSPCA Approved team and the wider RSPCA Australia team are working on implementing several improvements – all to help us make sure that we're doing the best we can to achieve a better quality of life for animals on farm, during transport and at abattoirs.

# SUPPORTING THE FEDERATION

RSPCA Australia supports the wider RSPCA federation in their life-saving work rehoming animals, investigating animal cruelty, community outreach and caring for animals who have no one else. This includes providing support and coordination for national initiatives, including our valuable corporate partnerships.



## MILLION PAWS WALK

We were so excited to welcome back over **30 in-person events across the country at the 2023 RSPCA Million Paws Walk in May!** Over 16,000 superhumans and 12,000 super-pooches came together to walk to fight animal cruelty, and enjoyed a pawsome day out filled with music, stalls, competitions, games, and all sorts of fun activities.

A huge thank you to all who helped make this year's event such a memorable one - especially to the dedicated staff across our country-wide, our dedicated volunteers, major event sponsor Royal Canin, our friends at Rufus and Coco Australia, and of course, to YOU! Together, we raised over \$665,000 for animals in need.

## GIVE TO GET THEM HOME

The RSPCA's annual **'Give to Get Them Home'** appeal was a great success, thanks to this year's three matching partners: **Royal Canin, Elanco, and Peter Alexander.** The appeal helped care for the thousands of animals across the country who come through the RSPCA's doors, particularly during the busiest months of the year.

Donations made to the RSPCA were doubled, thanks to the generous support of national partners, resulting in an **impressive total of just under \$2.3 million raised nationally, surpassing our initial target of \$2.2 million.** This significant amount covers the essential expenses such as microchipping, vaccinating, and desexing for a remarkable **15,292** precious animals, ensuring they are ready for adoption and a chance at finding loving homes.



## WORKPLACE GIVING

This year RSPCA's generous Workplace Giving Partners donated \$635,695 and a further \$44,283 was received by Organisations matching their staff's contributions.

RSPCA  
Darwin Regional Branch

## HAPPY PAWS HAPPY HEARTS PROGRAM

This year RSPCA Darwin has been working alongside Happy Paws Happy Hearts to provide human interaction and enrichment for our animals and create positive experiences for their participants. Later this year the team will move their offices and reception space into a new multipurpose facility that will enable them to offer a space for the Happy Paws Happy Hearts programs to run.

## NEW VICTORIAN FACILITY IMPROVES THE PET ADOPTION EXPERIENCE AND CAPACITY TO CARE

In April, RSPCA Victoria officially opened a new, purpose-built Cat and Small Animal (CASA) centre at its site in Pearcedale on the Mornington Peninsula. Known as CASA, the state-of-the-art facility has enhanced RSPCA's capacity to care for cats and small animals while transforming the way people meet and interact with animals available for adoption.

The new facility features state-of-the-art, climate-controlled cat "cabins" with concealed spaces to support cat welfare, an isolation wing to prevent the spread of infectious diseases and parasites, long-stay facilities for cats with access to contained outdoor spaces, and an adoption wing with light and spacious

"meet and greet" rooms for potential adopters.

CASA enables RSPCA Victoria to provide care for 250 cats and small animals at its Peninsula site. Designed in consultation with veterinarians and animal behaviourists, it is helping to reduce animal stress and illness, accelerate healing, and reduce adoption times.

CASA also provides a modern, welcoming space for members of the public who visit RSPCA to adopt a new pet. The bright, purpose-built spaces are designed to allow people to get to know animals one-on-one and find their pawfect match.



## READY, PET, GO

Ready, Pet, Go is the RSPCA's contribution to emergency preparation for companion animals in Tasmania.

With changing weather patterns and a drying climate, we urge everyone to adopt the principles of an Animal Ready Community, which are simply an extension of responsible animal care. Being animal ready means having your companion animals' vaccinations up to date and having

supplies; medicines, toys, bedding, and carriers ready to go in case of emergency.

Evidence suggests that people put themselves in harm's way to protect their animals in emergencies. We are working to ensure that every person with responsibility for an animal has the tools to act early and leave a dangerous situation early.

RSPCA Tasmania has developed a kit with a video, poster, DL flyer for councils, document wallet, stickers, and socials posts for dissemination before summer.



## PROCUREMENT

Close to \$2m was realised in procurement savings across the Federation for goods and services purchased nationally. Supply categories include, medications and consumables, telecommunications, fuel, waste, group Insurance and a new national uniform.



# APPRECIATING OUR CORPORATE PARTNERS

We would like to take this opportunity to thank our national partners, their staff, customers, and the wider business community. It is thanks to their generosity that we can continue doing our work, and we thank you sincerely for being on this journey with us.

To start, we would like to say a big thank you to our National Nutritional Partner, **Royal Canin**, for their invaluable support throughout the year. Thanks to Royal Canin supplying and delivering food for animals in all RSPCA centres, we have been able to feed thousands of cats and dogs in our care with a nutritious diet.

During the course of the last year Royal Canin have sponsored a hugely successful Million Paws Walk, with 31 events held around the country. Royal Canin also made a significant contribution as our Matching Partner for the Give to Get Them Home campaign and has continued to support animal welfare through the Terracycle partnership which produces recycled pet products. We have also worked with Royal Canin to update our shelter signage across

the country, which was a great opportunity to highlight some of the animals that were previously in our care on our new adoption signage.

**Elanco** (the maker of Advocate, Credilio and Seresto) has provided a comprehensive range of pet health products to our shelters across the country, ensuring that the animals remain free from fleas, ticks, worms, and other parasites. Their support as a matching partner of our national Give to Get Them Home event is highly appreciated and has helped numerous animals live their happiest and healthiest lives while increasing their chances of finding loving new families.

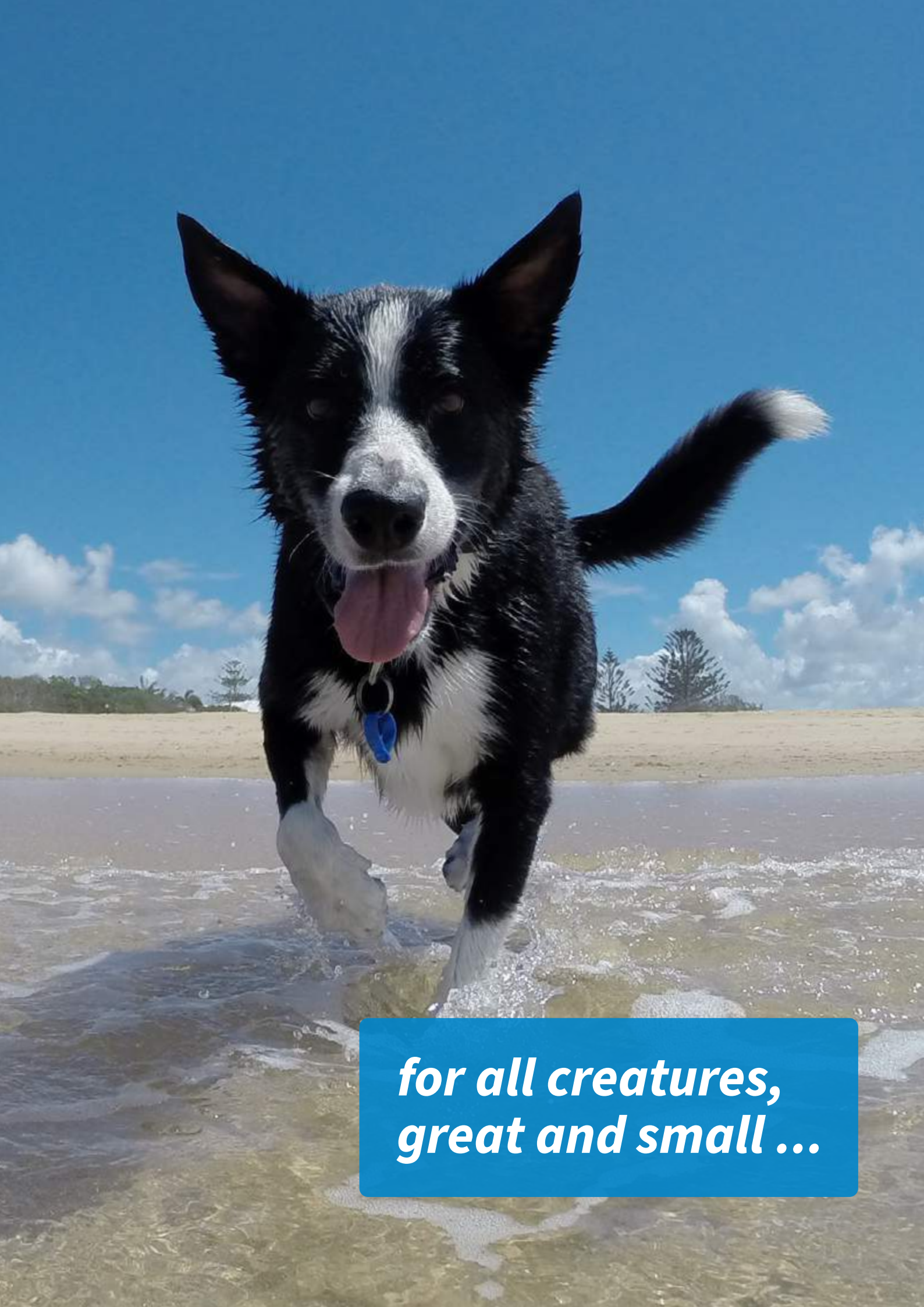
This year the team at **Petbarn** returned 100% of adoption fees to the RSPCA, totalling over \$1.2 million nationally. Petbarn's continued support to our adoption program is a significant contributor to enabling RSPCA to handle the increased

throughput of animals in need, particularly during peak season.

In a separate fundraising effort, the Petbarn Foundation have continued to support the RSPCA's work with senior animals, foster care, and community outreach.

Equally deserving of our gratitude is **Peter Alexander**, a major supporter who has utilised his profile and business to generate funds for the RSPCA. By selling seasonal fundraising chocolates and generously donating the proceeds, his dedication has made a tangible difference in our efforts to protect and care for animals in need. Peter Alexander's involvement as a matching partner of Give to Get Them Home has played a vital role in facilitating the adoption of countless animals into loving homes.

We would also like to thank Proviro Group, Oh Crap Dog Poo Bags, and Kong for their ongoing support and the delivery of quality products to our animal care centres' nationwide. The importance of the everyday pet products these partners provide cannot be understated and thanks to them the animals in our care continue to enjoy excellent living conditions.



for all creatures,  
great and small...



# FINANCIALS

**RSPCA Australia receives and distributes donations and bequests from the community and other fundraising income to RSPCA member Societies.**

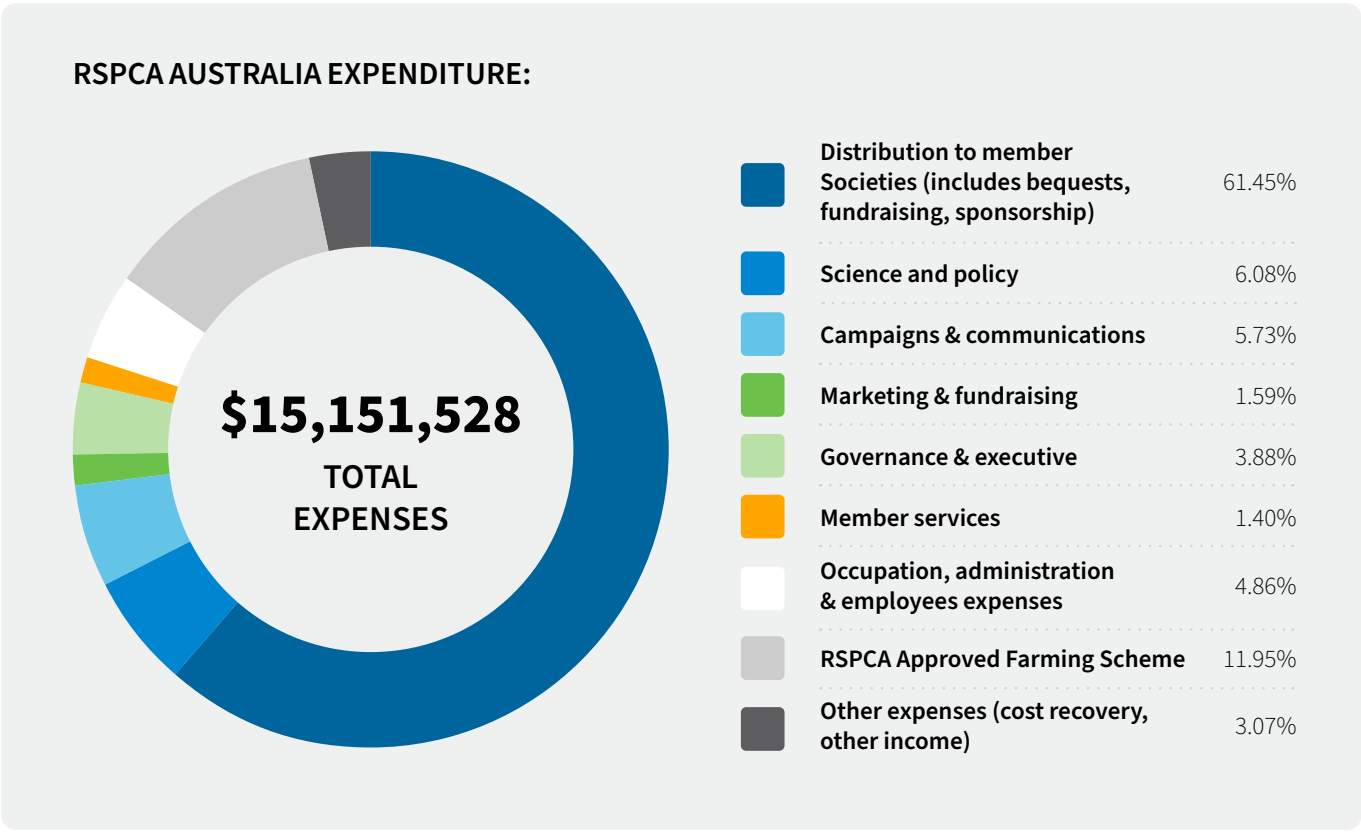
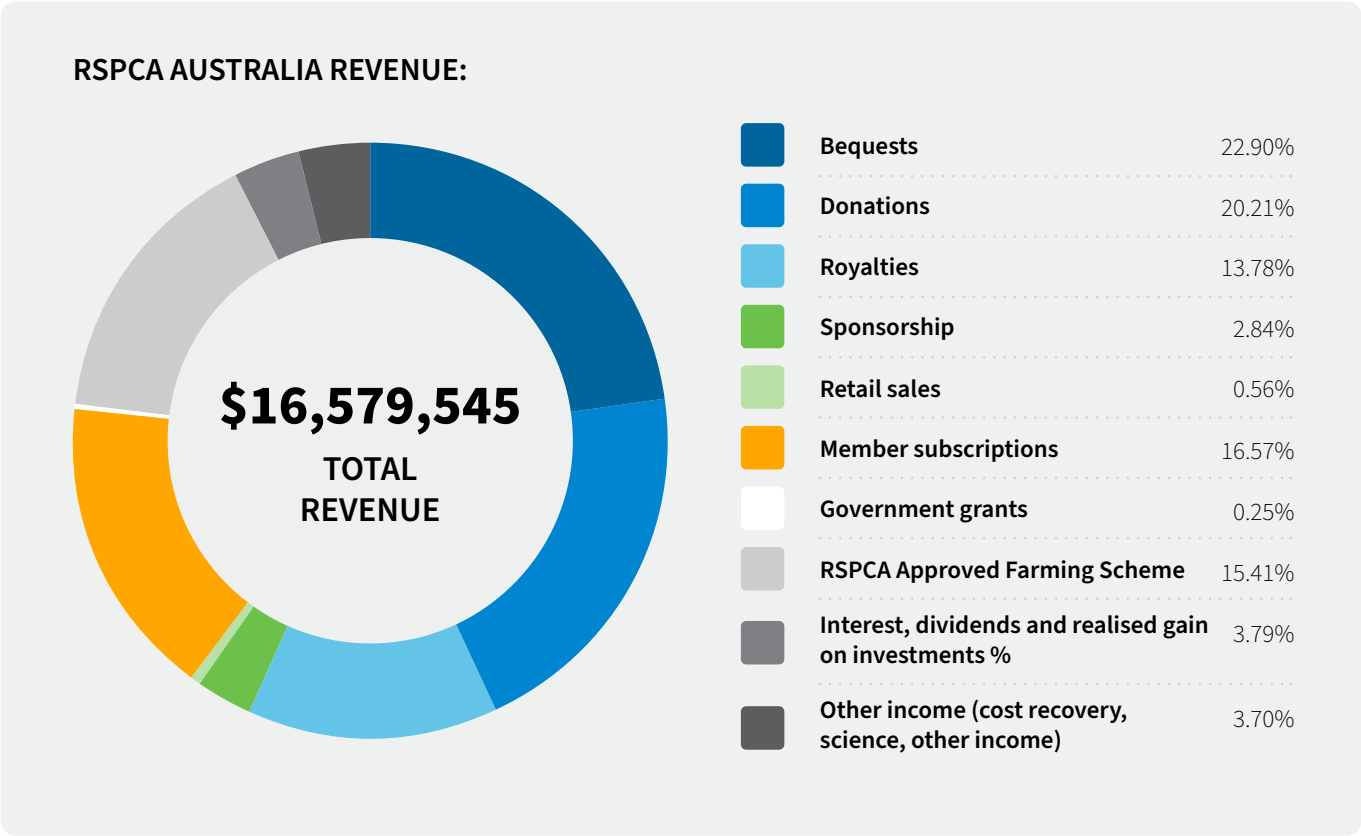
A small proportion of revenue comes from royalties through arrangements with corporate partners, which forms part of our distribution to member Societies. RSPCA member Societies in each state and territory deliver animal care services including adoptions and inspectorates.

All income generated by the RSPCA Approved Farming Scheme goes towards the cost of running the Scheme, including certification, marketing, and operational costs. Donations to the RSPCA do not fund the RSPCA Approved Farming Scheme and any surplus

generated by the Scheme is invested back into further development of the Scheme. RSPCA Australia’s full audited financial statements can be found on the ACNC website.



## KEY AREAS OF REVENUE AND EXPENDITURE 2022-23





***Thank you for  
your support ...***



PO Box 265  
Deakin West ACT 2600

02 6282 8300

[rspca@rspca.org.au](mailto:rspca@rspca.org.au)

[rspca.org.au](http://rspca.org.au)